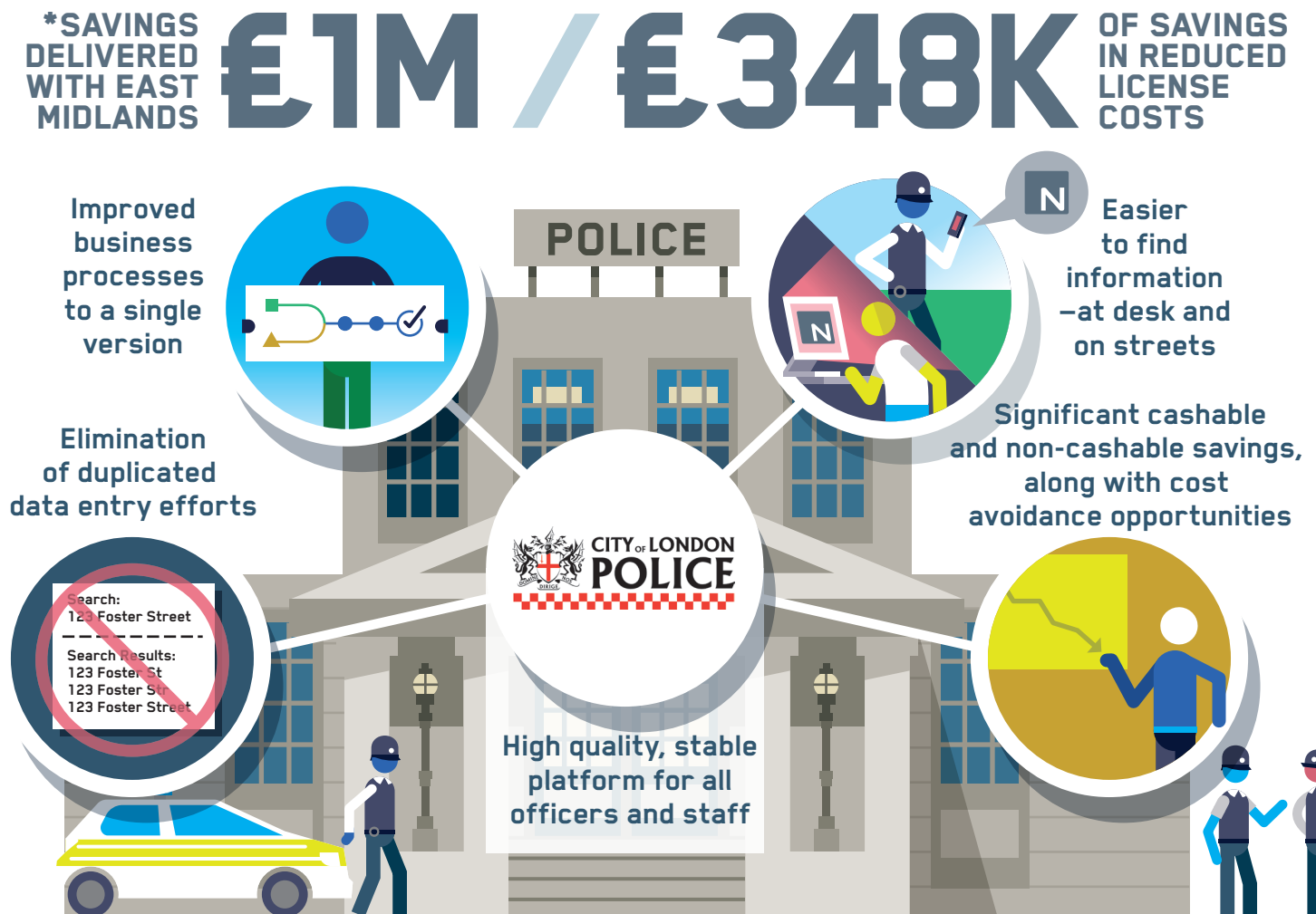


City of London Police Increase Operational Efficiencies and Cashable Savings with NicheRMS™

NicheRMS allows the City of London Police to integrate the force's legacy operational systems into a single, integrated solution that supports single keying of data across the organisation. The implementation of NicheRMS allows for increased operational and organisational efficiencies, increased cashable savings and better service to the City's residents and businesses.



NicheRMS provides us the functionality necessary to elevate our standard of policing and help make our force more efficient," said Detective Chief Inspector Pete Digby. "NicheRMS will enable us to better protect and serve the City of London's 9,000 residents."

About Niche Technology and NicheRMS

NicheRMS software enables law enforcement agencies to report, prevent and solve crime. NicheRMS is licensed to more than 137,000 sworn officers across Australia, Canada, the United Kingdom and the United States. Ten of the largest 30 agencies run NicheRMS in the countries we serve. For more information, please visit www.NicheRMS.com.

*Realized through a collaboration agreement rather than a single force.

Contact us

W: www.NicheRMS.com
E: info@NicheRMS.com
T: +1 204 786 2400

Niche Technology
629 McDermot Avenue, Winnipeg,
Manitoba, Canada R3A 1P6

Challenge

The City of London Police is responsible for managing the daily safety of 9,000 residents, 16,000 businesses, 400,000 workers and 8.94 million annual visitors within an area of 1.2 square miles.

The city of London has one of the densest concentration of key sites in any Force area, including five bridges, 62 million annual motor vehicle movements, 13 Tube stations, eight mainline stations and iconic sites, such as St. Paul's Cathedral and the Bank of England.

Due to siloed operational components, a paper-based storage system and no capabilities to remotely access or update information systems, City of London Police officers and staff were consistently challenged by data duplication, processing delays and difficulties locating pertinent information for ongoing investigations.

Needs

The City of London Police desired a single end-to-end solution to seamlessly manage all aspects of Crime Recording, Investigation, Intelligence Management, Vulnerability Management, Custody, Detainee Management, Property Maintenance and Electronic Case Preparation.

In addition, the solution needed to integrate with the Force's mobile devices to ensure officers and staff could remotely search, access and input data in conjunction with their daily policing duties.

Results

Implementing NicheRMS provides the City of London Police with numerous capabilities and benefits:

- A single location to record, search, access and update crime data, both in the office, remotely and on line with victims.
- Improved data quality through the elimination of double or triple keying information
- Faster information access since everyone is entering information into NicheRMS instead of disparate systems
- A single location for document storage for easier access and shared digital transfers
- A supervision hierarchy that defines tasks and timelines leading to improved victim care and compliance with the Victim Code of Practice
- Increased opportunity for Intelligence sharing through collaboration with neighboring agencies who also use NicheRMS
- User training and a structured business change process to help ensure full understanding and utilisation by officers and staff
- A cashable savings of £348K in license costs
- £1M savings in delivering the system with East Midlands through a collaboration agreement rather than a single force.

With NicheRMS, the City of London Police will continue to successfully accomplish their mission of striving for Integrity, Fairness and Professionalism in every aspect of their policing duties.

